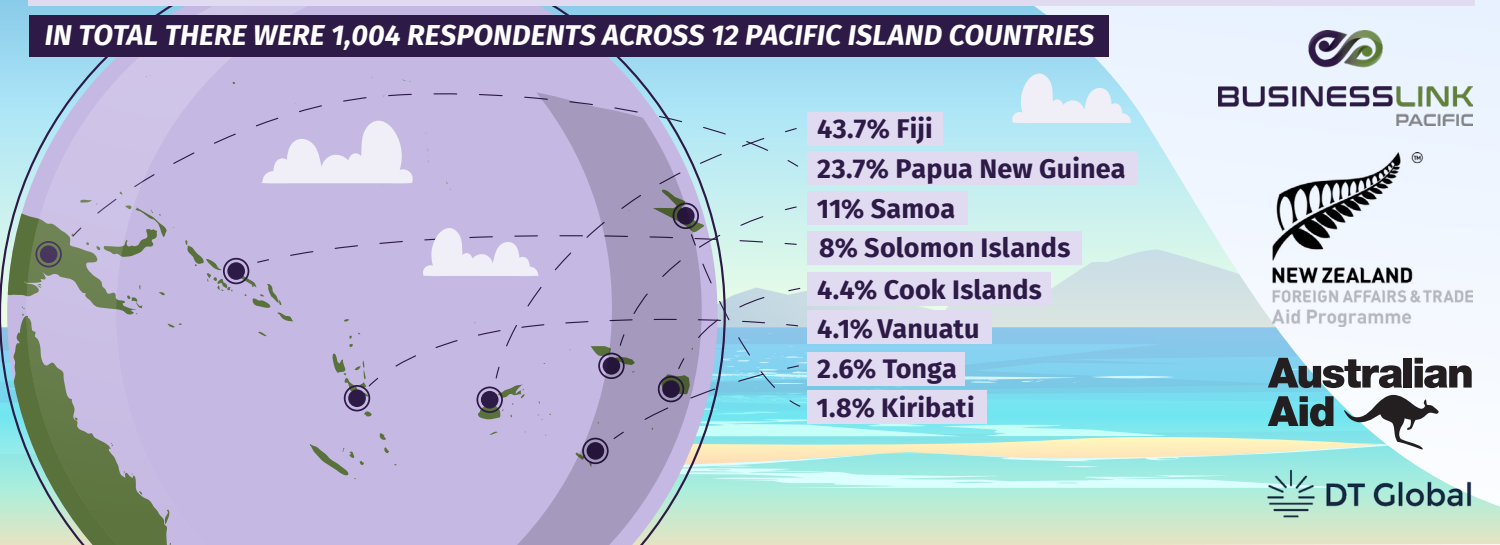
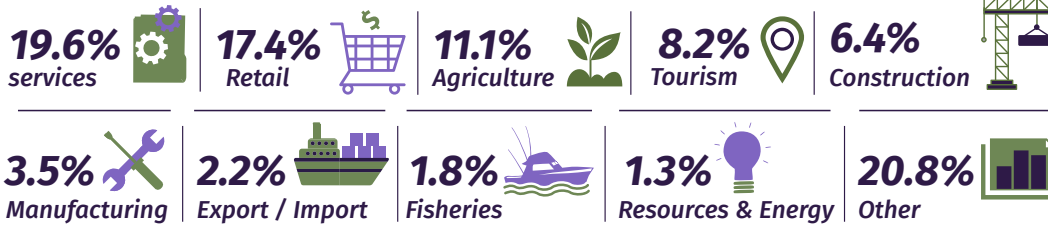


# BLP's SME FINANCE AND COVID-19 SURVEY RESULTS SUMMARY

IN TOTAL THERE WERE 1,004 RESPONDENTS ACROSS 12 PACIFIC ISLAND COUNTRIES



These businesses operate in all industry categories, including:



The gender composition of business ownership:



## MAIN FINDINGS: Covid-19 Impacts

- 60.6% of respondents reported an overall negative impact from COVID-19 over the last 12 months.
- 33.7% of respondents reported some degree of overall positive impact.
- 33.3% of respondents reported that they have experienced difficulty importing business supplies and stock.
- 63% of respondents think business conditions will improve in their industry over the next 12 months.

## HIGHLIGHTS:

### Impact of Covid-19 on SME's overall

